



University College Dublin  
Ireland's Global University



# International Visitors Guide

University College Dublin



## Table of Contents

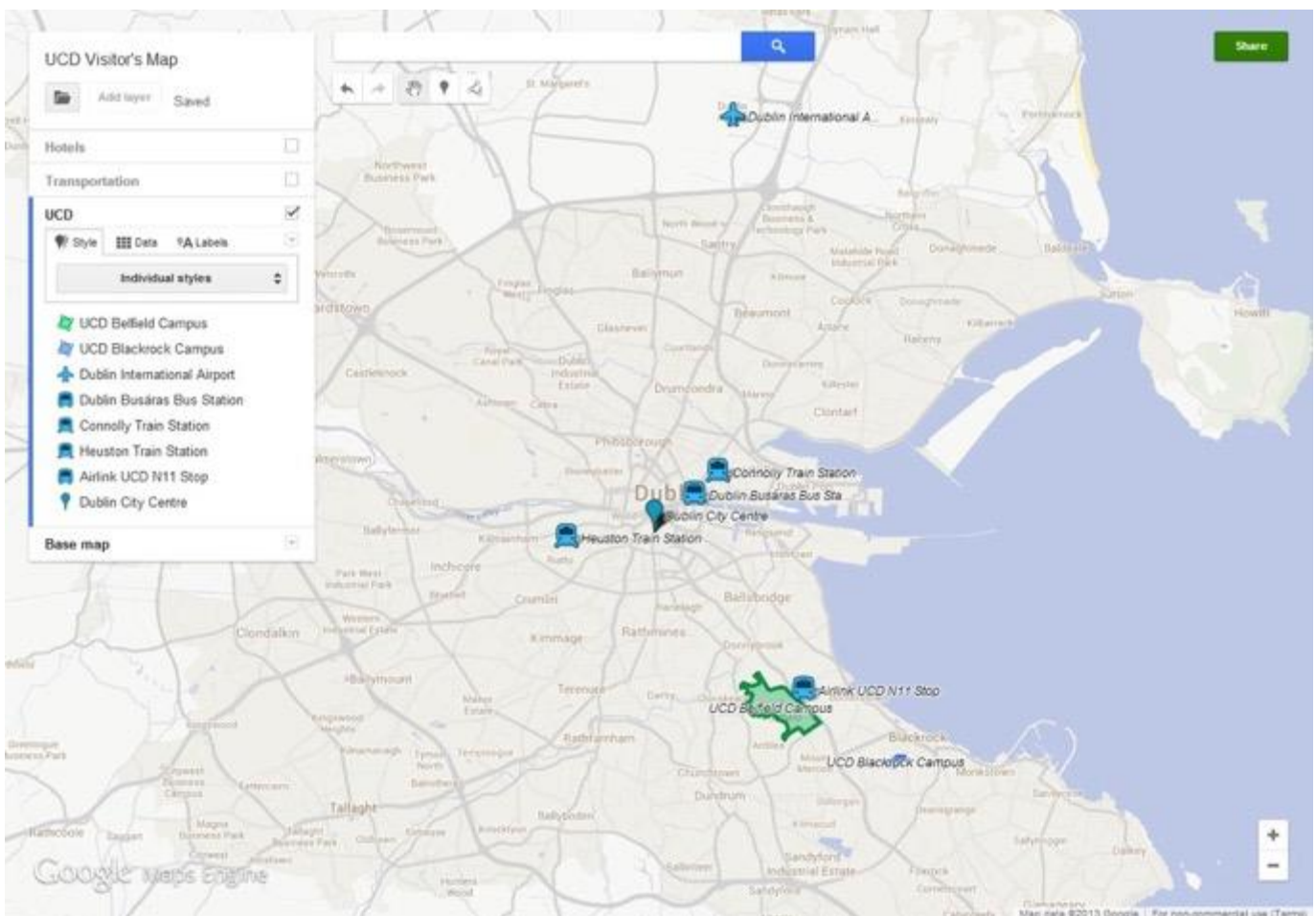
<b>Orientation .....</b>	<b>3</b>
<b>Practical Information .....</b>	<b>4</b>
Visas.....	4
Language .....	5
Weather .....	5
Currency .....	5
Tipping (Gratuity) .....	5
Emergencies .....	5
Transport in Dublin .....	6
Transport Apps .....	6
Additional Information about UCD .....	6
<b>Arriving in Dublin .....</b>	<b>7</b>
Arriving by Plane .....	7
Arriving by Train .....	7
<b>Traveling to UCD.....</b>	<b>8</b>
By Aircoach.....	8
By City Bus .....	9
Traveling by car .....	9
<b>Accommodation.....</b>	<b>10</b>
<b>Enjoying Dublin .....</b>	<b>12</b>
Do and See.....	12



## Orientation

Dublin is the largest city and capital of the Republic of Ireland. It has a compact city centre that is easily navigable by foot, with a much larger metropolitan area with many suburbs surrounding the city.

Dublin city centre is divided in half by the River Liffey, which flows west to east. The most famous attractions in Dublin can be reached within a ten-minute walk from O'Connell Bridge in the city centre, including Trinity College, Christchurch Cathedral, and Temple Bar, among many other sites. The main UCD campus is four kilometres south of the city centre in Belfield, Dublin 4, and the graduate school of business campus is in Blackrock, Co. Dublin, two kilometres southeast of the Belfield campus. Home to over 33,000 students, as well as 1,520 academic staff, a quarter of the university population is international, making it one of the most global universities



worldwide.



## Practical Information

### Visas

Note that the following is for informational purposes only. Official entry requirements for the Republic of Ireland are available through Irish Naturalisation and Immigration Service at [www.inis.gov.ie](http://www.inis.gov.ie).

All non-EU/EEA students must comply with Irish immigration requirements. According to Irish Naturalisation and Immigration Service, citizens of certain countries **do not** require a visa to enter Ireland. The list is available [here](#).

Citizens of all other countries need a visa when coming to Ireland. Please note that a Schengen or UK visa is **not** valid for travel to Ireland. Furthermore, two resources that may be of use are [Irish Department of Foreign Affairs](#) if you would like further details regarding the Irish Embassy attached to your country, as well as [Citizens Information](#) for general details on the different visa options.

If you require a visa for entry into Ireland, you must submit a letter of invitation (and possibly supporting documentation) along with your visa application. Please see [Irish Naturalisation and Immigration Service](#) and click on 'Visas' for further information. Do keep in mind that visa application processing times can be up to eight weeks. Please email the [UCD International Office](#) if you require a letter of invitation from UCD.

**Note:** This section is for informational purposes only. Official entry requirements for the Republic of Ireland are available through the Irish Naturalisation and Immigration Service website.



## Language

The Irish language is the official national language of the Republic of Ireland, though English is the most widely used language in the country. In Ireland, road signs and most official plaques, maps, and other official documentation are presented in both languages. You will not need to know any Irish to visit the country, but any attempt to learn the language will likely be appreciated.

## Weather

Dublin weather is very mild, with very little snow in the winter and very few extremely hot days in the summer. It rains frequently in Dublin, though typically only light showers with few thunderstorms. Rain coats and/or umbrellas are a daily necessity in Dublin. It is recommended to pack layers, as the weather frequently changes from chilly and wet in the morning to warm and sunny in the afternoon, no matter the season. Below is a table with the average high and low temperatures for Dublin for reference:

	Jan	Feb	Mar	Apr	May	Jun	Jul	Aug	Sep	Oct	Nov	Dec	Year
<b>Average High °C (°F)</b>	8.8 (47.8)	8.9 (48)	10.7 (51.3)	12.4 (54.3)	15.2 (59.4)	18.0 (64.4)	20.2 (68.4)	19.6 (67.3)	17.3 (63.1)	14.0 (57.2)	11.0 (51.8)	9.3 (48.7)	13.8 (56.8)
<b>Average Low °C (°F)</b>	3.9 (39)	3.9 (39)	5.2 (41.4)	6.4 (43.5)	9.0 (48.2)	11.6 (52.9)	13.5 (56.3)	13.3 (55.9)	11.4 (52.5)	8.8 (47.8)	6.2 (43.2)	4.5 (40.1)	8.2 (46.8)

## Currency

The official currency of the Republic of Ireland is the Euro, the shared currency of 18 other European Union member states. ATMs are available throughout the country for cash withdrawals, and credit cards are widely accepted. Cash can be exchanged before you leave your home country or in Dublin International Airport upon arrival, but be aware that fees and exchange rates for such transfers may be much higher than withdrawing from an ATM here.

## Tipping (Gratuity)

While gaining in popularity, tipping is not typical in Irish culture. As a general rule, if you would like to give a gratuity, somewhere in 10% range would be standard. Note that some restaurants add a "service charge" to the bill in lieu of any expected tip.

## Emergencies

Ireland has two national emergency numbers: 112 and 999. Either will connect you with police, fire, and ambulance services. These numbers are for emergencies only and can be dialled from any phone. In addition, UCD has a 24-hour emergency line at 01 716 7999.



## Transport in Dublin

There are many transportation options through which to explore Dublin.

- **Dublin Bus:** County-wide bus system. See site/app for real-time travel updates, timetables, and route planner. Mobile: Dublin Bus Line ([iPhone](#); [Android](#)).
- **Irish Rail** [DART and Commuter]: See site/app to buy tickets (also available at stations), reserve seats, and check train times. Mobile: Iarnród Éireann– Irish Rail Official App ([iPhone](#); [Android](#)).
- **DART:** Dublin-wide electric rail system.
- **Commuter Services:** Country-wide rail system.
- **Luas:** Dublin’s light rail tram system. See site/app for fare details and route information. Mobile: LUAS ([iPhone](#); [Android](#)).
- **dublinbikes:** Self-service bike rental system. Rental options include a 3 Day Ticket (€5) or an Annual Card (€25). Mobile: Just Eat dublinbikes ([iPhone](#); [Android](#)).

**Note 1:** Save money with the [Visitor Leap Card](#), a discount card for Airlink airport shuttle, Dublin Bus, Luas, DART, and Commuter Rail. Mobile: Leap Top-Up App ([Android](#)).

**Note 2:** Exact fare is recommended for Dublin Bus services, due to its operation as an **exact fare system**. This means that if you’re owed change, you will be issued a passenger refund ticket. This ticket can be then exchanged, at the Dublin Bus office in O’Connell Street, for the money you are due.

## Transport Apps

- **Journey Planner:** Build integrated travel plans with all train/bus/ferry/taxi service options across Ireland. Mobile: Transport for Ireland App ([iPhone](#); [Android](#)).
- **Official Dublin Discovery Trails:** Explore orientation walking routes through the city centre. Mobile: Official Dublin Discovery Trails ([iPhone](#); [Android](#)).
- **Dublin Cycle Planner:** Find the best cycling routes based on individual cycling capabilities. Mobile: Dublin Cycle Planner ([iPhone](#); [Android](#)).

## Additional Information about UCD

- **Visiting UCD:** Find general material on campus life, including maps and available facilities (including UCD Sporting facilities and shops).
- **UCD Interactive Map:** Locate buildings and common services across UCD (both Belfield and Blackrock). Maps available for download.
- **UCD Mobile App** ([iPhone](#); [Android](#)): Access maps (*Places, Tours, etc*), UCD Connect (internal university services), library catalogue, dining options, and the like.



## Arriving in Dublin

### Arriving by Plane

Dublin is serviced by Dublin International Airport, located approximately nine kilometres north of the city centre. Connection to the city is available through Dublin City Bus, Airlink Express, and/or taxis.

Transfer information for each service is provided below:

- **City Bus:** Dublin Bus [line 16](#) (to Ballinteer/Kingston) and [line 41](#) (to Lower Abbey St) pick up from Terminals 1 & 2 and drop off in Dublin city centre.

Fare: €3.30 (€2.60 with Leap Card).

- **Airlink Express:** The turquoise blue shuttles leave regularly from Dublin Airport Bus Terminals 1 & 2 ([map](#)) from 4.45 am to 00.30 am, every day. The service operates two routes: the **747 route** (Dublin Airport to/from Heuston Rail Station) and the **757 route** (Dublin Airport to/from Camden) with easy access to the Luas Green Line. Tickets can be purchased in advance online, from a representative at the airport, or on the coach on the day of service. Timetables and route maps can be found [here](#).

Intercity bus service terminates at Dublin Busáras (Central Bus Station), less than half a kilometre from the city centre. Exiting the bus station, continue west along Lower Abbey Street to reach O'Connell Street.

Fare: €7 one way/€12 return

- **Taxi Service:** Taxis are readily available from Dublin International Airport to the city centre. For a convenient cash-less alternative, download the mytaxi mobile app ([iPhone](#); [Android](#)) to avail of the pay-by-app option.

Fare (to city centre): estimated €20-30.

### Arriving by Train

Dublin has two main train stations: Heuston and Connolly. Purchase train tickets, reserve seats, and review timetables on the Irish Rail [website](#).

- **Heuston Railway Station** to the west of the city centre connects Dublin with many cities in the west and south of the country, including trains to Galway and Cork. To reach city centre from here, board the Luas Red Line at Heuston and alight at the Abbey Street stop.
- **Connolly Railway Station** includes services to the east and north of the island, including Belfast trains. It is less than a kilometre east of the city centre; walking south on Amiens Street to the River Liffey, then west on Eden Quay will get you to the city centre in less than ten minutes. Alternately, the Luas Red Line stop can be taken two stops to Abbey Street.



## Traveling to UCD

University College Dublin is located an easily travelled distance to the city centre, and is served by many frequent bus lines (including 7B, 7D, 39A, 46A, and 145). Please see below for further information on services available including Aircoach (private shuttle bus) and City Bus options to/from UCD Belfield and Blackrock, as well as vehicular ones.

### By Aircoach

If traveling directly from Dublin International Airport to UCD Belfield, the [Aircoach Leopardstown shuttle](#) service will stop on the N11 at the Montrose Hotel, directly opposite the UCD Belfield N11 Entrance. Shuttles leave from Terminals 1 & 2 every fifteen/thirty minutes and operate 24 hours per day, seven days per week. Tickets can be purchased in advance through the [online booking](#) service, from a representative at the airport, or on the coach on the day of service. When boarding, ask the driver to notify you when they are approaching UCD. For route and fare details, [click here](#). The stops immediately preceding arrival to UCD (N11 – UCD Slip Road) include Donnybrook Road and RTE (N11).

Fare: €9 one way/€14 return.

Refer to the map provided by Aircoach:







## By City Bus

### To UCD Belfield Campus:

Dublin Bus lines 7B, 7D, 39A, 46A, and 145 connect the city centre and UCD Belfield Campus. The 39A lets off inside UCD Belfield Campus, while others (7B, 7D, 46A, and 145) let off on the N11 slip road in front of the Montrose Hotel, directly across from the UCD Belfield N11 Entrance. For fare details and timetables, please refer to the [Dublin Bus website](#).

### To UCD Blackrock Campus:

- [Dublin Bus line 7](#) towards Loughlinstown/Cherrywood travels from city centre to Blackrock village.
- [DART trains](#) run from the city centre (Connolly Train Station, Tara Street Station, and Pearse Station) and drop off at Blackrock DART station. They run every 5-10 minutes and the trip takes 20 minutes. DART/Short Hop Zone Fare details and timetables can be found online.

Both Dublin Bus line 7 stop and the Blackrock DART station are in the centre of the village. UCD Blackrock Campus is a short walk at less than one kilometre from Blackrock village.

## Traveling By Car

- **Taxis:** Easily found at the airport and in the city centre, fare from the latter to UCD Belfield campus will cost an around €15 (plus the aforementioned cost of €20-30 for transit from the airport). Direct the taxi driver to enter through the N11 entrance to campus.
- **Driving:** If traveling to UCD with your own vehicle, parking is limited on the UCD Belfield Campus. For short term parking, it is best to enter the campus by the N11 entrance and park in any Pay and Display parking space. Another option is [GoCar](#), a cost-effective car sharing programme that accepts most international driving licenses. It is [now available at UCD](#) with a reserved space in the car park nearest the Ardmore Annex and Ardmore House.



## Accommodation

There are many accommodation options available in and around Dublin. When booking accommodation, you will have the choice of staying closer to the city centre or in the suburbs closer to UCD.

We have negotiated UCD corporate rates with the following five hotels. Please state you are booking for UCD to avail of the reduced rate.

**Note:** It is recommended you contact the hotel directly for up to date information as the rates are subject to change.

These options are outlined below:

Stars	Hotels with Corporate Rates	Room Rate
★★★★★	<a href="#">Radisson SAS St Helen's</a> Stillorgan Road, County Dublin T: +353 (0)1 218 6000 E: <a href="mailto:info.dublin@radissonblu.com">info.dublin@radissonblu.com</a> W: <a href="http://www.radissonblu.ie/sthelenshotel-dublin">www.radissonblu.ie/sthelenshotel-dublin</a> Reservations: 1-800-333-3333 (US), 1800 557 474 (Ireland), +353 1 706 0225 (EU)	To be advised upon booking
★★★★	<a href="#">Talbot Hotel Stillorgan</a> Stillorgan Road, Dublin 4 Tel: +353 (0)1 2001800   <a href="#">Email</a>	€75-€124 (breakfast option)
★★★★	<a href="#">Clayton Hotel Ballsbridge</a> Merrion Road, Dublin 4 Tel: +353 (0)1 6681111   <a href="#">Email</a>	Approx. €79-€150
★★★★	<a href="#">Ballsbridge Hotel</a> Pembroke Road, Dublin 4 Tel: +353 (0)1 6379300   <a href="#">Email</a>	To be advised upon booking

There are many other hotels in the Dublin area, some of which are outlined below. It is recommended you contact the hotel directly for up to date information as the rates are subject to change.

Stars	Other Dublin Area Hotels	Room Rate
-------	--------------------------	-----------



Stars	Other Dublin Area Hotels	Room Rate
★★★★	O'Callaghan Davenport Hotel	Approx. €79- €99
	Hampton Hotel – Donnybrook	Rate: from €85-190
★★★★★	Conrad Hotel	from €97-€99
★★★★★ ★★★★	O'Callaghan Hotels O'Callaghan Stephen's Green (4 Star) O'Callaghan Alexander (3 Star) O'Callaghan Mont Clare (3 Star)	€103 pp €95 pp €87 pp
★★★★★	Mespil Hotel Dublin	
★★★★★	School House Hotel	€99
★★★★	Andorra Bed & Breakfast	from €108
★★★★	Camden Court Hotel	€77 pp
★★★★	Central Hotel	From €60
★★★★	Harcourt Hotel	€69 pp
★★★★	Paramount Hotel	€95 pp
★★★★	Staunton's on the Green	€95 pp
★★★★	Trinity Lodge Hotel	From €85



## Enjoying Dublin

There are many famous and fantastic attractions in and around Dublin. The list below offers a small snapshot of the innumerable options for sightseeing. Consult a travel book or visit the one of the Discover Ireland Centres for advice and information.

### Do and See

#### Guinness Storehouse

St James's Gate, Dublin 8

Buses 40 towards Liffey Valley Shopping Centre or 123 towards Walkinstown

Phone: +353 (0)1 4084800

Hours: Daily 9:30 – 17:00. For holidays and extended hours, refer online.

Tickets: €17.50 adults (discounts available online)

This interesting and self-guided exhibition retells the story of Dublin's most famous drink. Price of entry includes a complementary pint at the seventh floor Gravity Bar, which has great views over Dublin and forms the architectural head of the giant pint of Guinness formed by the atrium.

---

#### Temple Bar District

City Centre – south of the River Liffey, between Westmoreland St. and Parliament St.

This district is famous for its narrow, cobbled streets, shopping and restaurants, and late-night revelry. There are a great deal of bars, cafés, shops, and restaurants to enjoy, and though many can be pricey and swamped with tourists in the summer months, the district is an experience in and of itself. Make sure not to miss the weekend market in Meetinghouse Square and the Wall of Fame.





### National Museum of Ireland: Archaeology

Kildare St., Dublin 2

### National Museum of Ireland: Natural History

Merrion St., Dublin 2

### National Museum of Ireland: Decorative Arts and History

Collins Barracks, Benburb St., Dublin 7

**T:** +353 (0)1 677 7444

**W:** [www.museum.ie](http://www.museum.ie)

**Hours:** Tues-Sat 10:00–17:00; Sun 14:00–17:00

**Price:** Free



The three National Museums of Ireland located in Dublin offer three different perspectives on the history and heritage of the country. The Archaeology and Natural History museums are located next door to each other and adjacent to the Leinster House, the location of the Irish Parliament, an architectural marvel not to be missed. The Decorative Arts and History museum is further west of the city centre, close to the Guinness Storehouse.

---

### Howth Head Cliff Walk

Howth Peninsula, Co. Dublin

**DART:** Train from Dublin City Centre to Howth Station

A beautiful walk along the cliffs of Howth affords wondrous views of the Irish Sea and Dublin Bay along the seafront. A 15km well-travelled trail loop with moderate inclines can be completed in 2-3 hours. The path is clearly marked, and the village of Howth offers many post-hike restaurants and respites, including a small market on weekends.

---

### Phoenix Park & Dublin Zoo

Dublin 8

**W:** [www.dublinozoo.ie](http://www.dublinozoo.ie)

**Zoo Hours:** Daily 09:30–18:00

**Price:** €16 adults, €12.50 students

Phoenix Park is the largest enclosed urban park in Europe and contains a host of wonders for a day outside. The park grounds contain residence of the President of Ireland, several lawns and gardens, the 17<sup>th</sup> Century Magazine Fort, a herd of wild Fallow deer, and the Dublin Zoo. The zoo itself is the largest in Ireland and exhibits all kinds of animals, from tigers and leopards to meerkats and apes.





---

### Chester Beatty Library & Dublin Castle

2 Palace St, Dublin 2

**T:** +353 (0)1 677 7129

**Hours:** Mon-Sat 10:00–16:45, Sun 14:00–16:45

Price: Free

Dublin Castle has played a prominent role in the history of Ireland in its 800 year history. The State Apartments, Dubhlinn (dark pool) Gardens, and Norman Tower (home of the Garda Museum) provide unique perspectives on Dublin and Ireland. Of particular note is the Chester Beatty Library, home to a wide variety of artistic treasures.

---

### Kilmainham Gaol Museum

Inchicore Rd, Kilmainham, Dublin 8

**T:** +353 (0)1 453 5984

**Price:** €6 adults, €2 students

**Hours:** Daily 09:30–18:00

**W:** [www.heritageireland.ie/en/Dublin/KilmainhamGaol](http://www.heritageireland.ie/en/Dublin/KilmainhamGaol)

Located slightly outside the city centre, Kilmainham Gaol is a former prison turned museum. The guided tour of the museum provides a fascinating insight into Irish struggles for independence through the 200-year history of the prison.

---

### Wild Wicklow Tours

Glendalough, Co. Wicklow

**W:** [www.wildwicklow.ie](http://www.wildwicklow.ie)

**Price:** €28 adult, €25 student/child/senior citizen

County Wicklow, south of Dublin, offers an ideal escape from the hustle of city life. The mountains and lakes of Wicklow are wild and enchanting for individuals of any interest. Wild Wicklow Tours are one of many companies offering a guided tour of the area, including the glacial valley of Glendalough and the 6<sup>th</sup> Century monastic settlement there.





## Eat

Listed below are some popular venues around Dublin and its city centre, spanning Vietnamese fare to celiac-friendly options to Middle Eastern dishes. For those seeking kosher options, one acclaimed catering option is [Kosher Ireland](#), a service which provides meals directly to accommodation across the country.

For additional dining venues, please refer to the [Lonely Planet](#) for its list of best places to eat in Dublin. Another excellent resource is [Lovin Dublin](#), a popular website that covers food, lifestyle, news, and cultural events all across the city.

---

### Green 19

19 Camden Street Lower, Dublin 2

Tel: +353 (0)1 4789626

A mix of classic meals like corned beef and pot roast chicken with international favourites like burritos and red lentil curry.

### Pablo Picante

4 Clarendon Market, Dublin 2

Tel: +353 (0)1 5519000

Voted the best burrito in Dublin, visit for some amazing Mexican dishes.

### Crackbird

60 Dame Street, Dublin 2

Tel: +353 (0)1 6169841

Casual dining, relaxed atmosphere and amazing chicken!

### Saba

26/28 Clarendon Street, Dublin 2

Tel: +353 (0)1 6792000

Award winning Thai & Vietnamese food with a great location and atmosphere to match. Many allergen/celiac-friendly options.



---

### **The Winding Stair**

40 Lower Ormond Quay, Dublin 1

Tel: +353 (0)1 8727320

Bookshop & restaurant named after a Yeats poem, overlooking the iconic River Liffey.

### **Gallagher's Boxty House**

20-21 Temple Bar, Dublin 2

Tel: +353 (0)1 6772762

Good old fashioned Irish food, perfect after a long day's sightseeing. Stews, chowders, coddle and, of course, the famous Irish boxty.

### **Shanahan's On the Green**

119 St. Stephens Green, Dublin 2

Tel: +353 (0)1 4070939

One of the best steak and seafood restaurants in Dublin, the restored Georgian building opposite St. Stephen's Green offers choice food and wonderful ambiance

### **Damascus Gate**

10 Upper Camden Street, Dublin 2

Tel: +353 (0)1 4752000

A popular restaurant that specialises in Syrian and Lebanese fare, it is an excellent spot for Halal options.





University College Dublin  
Belfield, Dublin 4, Ireland

T: +353 (0)1 XXX XXXX

W: [www.ucd.ie](http://www.ucd.ie)